



...Reliable and Innovative Solutions



**Cutting-Edge**  
Global Energy Services Limited

[www.cuttingedgeglobalenergy.com](http://www.cuttingedgeglobalenergy.com)

**Cost-effective solutions  
for the oil and gas industry**



## About us

Cutting-Edge Global Energy Services Limited was established by energy industry veterans, to provide innovative, safe, efficient and rapid bespoke solutions to the global energy industry. Our team of experts integrates Subsurface Management, Subsea Architecture, Topsides Facilities, Asset Integrity Management, Marine Operations and efficient Procurement and Logistics Administration for seamless and flawless project delivery.

Cutting-Edge Global Energy Services Limited has established itself as a key energy services provider in both the deep and shallow waters of the offshore environment, and also in the more stable onshore environment.

The company has a reputation for high quality, safe operations and flawless execution. With an expanded geographic network and an operating fleet sized correctly to service the markets where it operates, Cutting-Edge Global Energy Services Limited has an overarching goal of safely, economically and efficiently providing the highest degree of innovative and cutting-edge solutions to her customers.

## Our Vision

To be the integrated energy service company of choice, for all our stakeholders.

## Our Mission

To be a world-class Energy Service company, by integrating subsurface management, subsea services, Asset integrity management, marine operations and efficient procurement and logistics administration to deliver seamless and flawless solutions responsibly, balancing risk and opportunity in a sustainable manner.



# Our Services

## 1 Engineering, Procurement, Construction, Installation and Commissioning (EPCIC)

We offer an integrated and exceptional EPCIC services to our teaming clients, thereby helping them to efficiently deliver major offshore and onshore oil and gas development Projects, from conceptual studies through Front End Engineering Design (FEED), Contracting, Detailed Design, Procurement, Construction, Installation, Commissioning & Start-Up, and Operations Support. And we achieve this, below budget, ahead of schedule and at no harm to personnel, equipment or the environment.

## 2 Subsea Intervention and Production Optimization

We offer a world-class cutting-edge subsea intervention and production optimization services that delivers enormous cost-savings and increased production from subsea wells. Discover how we integrate subsea and marine services for seamless project delivery. Our team of experts combine creativity and innovation with high quality and rigorous risk assessment, always maintaining the ability to respond rapidly and effectively, thereby delivering cutting-edge subsea solutions to our clients.

Our local workforce and strong local supplier networks can domesticate our services in any local environment to save you time and costs. Our local teams are backed up with global resources, standardised measures and practices to give you rest of mind. We stand shoulder-to-shoulder with you all through the stages of your subsea facilities life cycle, from design, procurement, fabrication, construction, factory acceptance tests (FAT) and site integration tests (SIT) to offshore installation, commissioning, completion, operation and decommissioning. We tailor bespoke solutions to complex subsea installation operations including design of operational tooling employed in manned and remotely-operated subsea equipment.



## Our Services

With an emphasis on safety, Cutting-Edge Global Energy Services Limited provides a complete range of subsea services viz:

- **Saturation and Air Diving for Field life-cycle support**

Diving services such as saturation and air diving for construction and inspection, maintenance and repair activities in conformity with international standards.

- **ROV and AUV services**

Remotely Operated Vehicles (ROV) and Autonomous Underwater Vehicle (AUV) services are deployed in a safe manner. Our ROVs incorporate video cameras, lights, sonar systems, and an articulating arm. Our AUVs are unmanned.

- **Survey and Positioning**

Our in-house survey and inspection teams provide services to match a full range of field life-cycle project requirements - from near-shore shallow fields to ultra-deep offshore developments. Custom-made solutions and leading technologies developed and implemented around the world on our fleet and third-party vessels or installations.

- **Construction and Installation**

A proven track record of providing subsea Construction and Installation and construction support activities. We regularly deliver highly cost-effective subsea projects, on time, within budget and in safe manner. We provide comprehensive consultancy for front-end engineering, feasibility studies, concept development, design, installation and removal of offshore and marine structures.

- **Tow, Mooring Installation and Repair**

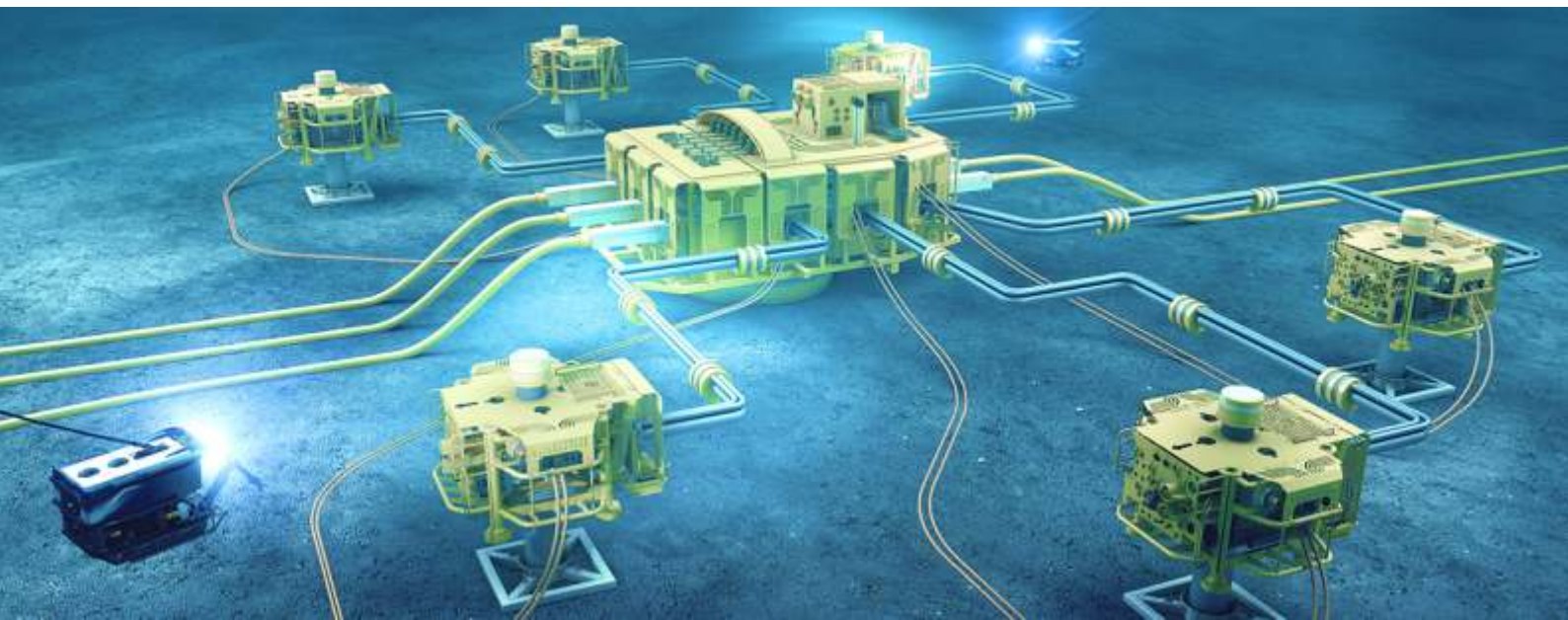
Wide-ranging track-record and a flexible fleet to provide Towing, Mooring and Installation, SURF (Subsea Umbilical, Riser and Flowline) and Commissioning services. We work to keep your facilities operating at optimum capacity, closely matching changing industry demands to offer an even better fit for integrated project delivery.

- **Inspection Maintenance and Repair (IMR)**

Cutting-Edge Global Energy Services Limited have all IMR related disciplines in-house to offer integrated, accessible, subsea solutions. We have a successful track record ensuring subsea asset integrity and maximising subsea asset and production uptime and availability. We plan and execute campaigns to the highest HSE standards, regularly undertaking varied IMR work scopes.

- **Decommissioning and Field abandonment services**

When subsea infrastructure has reached the end of its useful life, and is ready for planned abandonment activities, our teams have a history of planning and delivering regulatory and environmentally compliant decommissioning and abandonment projects - on time, within budget and safely.



## 3 Marine Operations

Our expert teams' world class experience in marine and offshore operations deliver reduced project risk, increased efficiency and improved safety performance. Our operational teams combine technology and experience to bring award-winning capability to the offshore sector.

These comprehensive in-house capabilities and our wide range of partnerships and operational expertise make us the trusted choice for integrated and direct support marine operations



***We offer a wide range of marine services, including provision of:***

- Supply Vessels
- Offshore Construction Vessels (OCV)
- Diving Support Vessels (DSV) / Air Diving
- Pipe-Lay Vessels (PLV) / Cable-Lay Vessels (CLV)
- ROV Support / Survey Vessels
- Emergency Response Rescue Vessels (ERRV)
- Accommodation Vessels (Floatels, Monohull, Semi-Sub, Jack-Up, Cylindrical)
- Semi-Submersible, Jack-Up Drilling Rigs, Drill Ships
- Windfarm Support Vessels & Jack-Up Installation Units
- Crew Transfer Vessels (CTV)
- Tugs, Barges, Pontoons FPSO
- Heavy Lift Vessels (HLV) / Crane Vessels
- Special Project Cargo Vessels
- Vessels for Cold Climate Offshore Icebreakers
- Jack-Up & Semi-Submersible Rigs



## 4 Asset Integrity Management

Cutting-Edge Global Energy Services Limited maintains a realistic strategy for the execution of optimised maintenance management regime. We offer a standardised CMMS data set that is customised to your own business requirements and operations. This provides a clear process for equipment “repair and spares” decisions based on risk, consequence and likelihood. Our robust equipment criticality selection process helps you manage risk and optimise expenditure. We also help you to unlock efficiencies in your operations through a clear and concise definition of your asset management strategy.

You would be positioned to tap into our expert experience to identify the most logical, streamlined and efficient asset management tactics for your operations - and this is key to creating a productive maintenance management regime.

***Our Asset Integrity Management suite of solutions offers the following to our teaming clients:***

- |  |   |  |
|--|---|--|
| <ul style="list-style-type: none"> <li>• CMMS/EAM Selection</li> <li>• CMMS/EAM System Migration Strategies</li> <li>• Asset and Maintenance Reference Plans</li> <li>• Maintenance Philosophy Development</li> <li>• CMMS Data Blueprint</li> <li>• Maintenance Strategy Creation</li> <li>• Repair and Sparring</li> </ul> | <p><b>Philosophy/Decision Criteria Creation</b></p> <ul style="list-style-type: none"> <li>• Data Governance</li> <li>• Corrective and Preventive Maintenance Prioritisation Strategy Development</li> <li>• Equipment Criticality Assessment Process Development</li> <li>• Work Management</li> </ul> | <p><b>Standards and Procedures</b></p> <ul style="list-style-type: none"> <li>• Operational Readiness Support</li> <li>• CMMS Data Analyst Manpower</li> <li>• Maintenance Consultant Strategic Advice</li> <li>• RAM Analysis</li> <li>• Training of personnel</li> </ul> |
|--|---|--|



## 5 Procurement & Logistics

Cutting-Edge Global Energy Services Limited offers an integrated Procurement and Logistics Services across the energy value chain.

We are strategically positioned as a Global Buying House, thereby procuring and delivering the required materials and equipment to enable our clients deliver their projects and operations in a safe, timely and cost-effective manner, including:

- |  |   |   |
|--|---|---|
| <ul style="list-style-type: none"><li>• Compressors and Turbines</li><li>• Power Generators</li><li>• Separators and Filters</li><li>• Heat Exchangers</li><li>• Pressure Vessels &amp; Boilers</li><li>• Pipes and Tubular Products</li></ul> | <ul style="list-style-type: none"><li>• Pipe Fittings and Flanges</li><li>• Valves &amp; Actuators</li><li>• Pumps, Parts and Accessories</li><li>• Drilling Equipment</li><li>• Drilling Chemicals and Mud</li><li>• Hoses and Fluid</li></ul> | <ul style="list-style-type: none"><li>• Handling accessories</li><li>• HVAC Equipment and Supplies</li><li>• Instrumentation and Controls Units</li></ul> |
|--|---|---|





## 6 Project Management

Cutting-Edge Global Energy Services Limited adopts a Lean Project Management (LPM) approach, which differs greatly from traditional oil and gas industry project management, which often leads to projects escalating in cost and not being delivered to schedule.

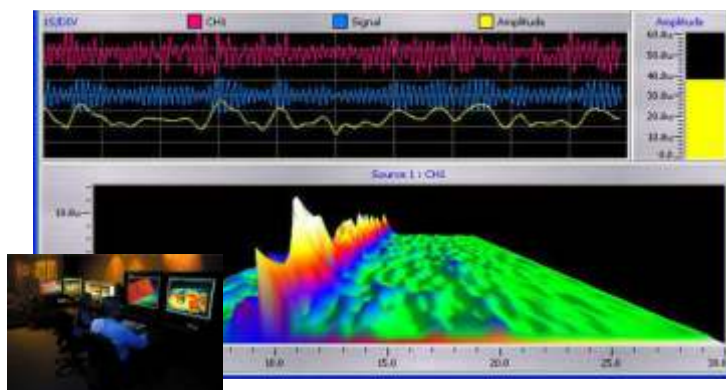
We operate with lean teams who are empowered to deliver and clearly understand their objectives. We focus on risks and the actions required to mitigate them, hence delivering our client's project on time and on budget.



## 7 Data Acquisition and processing

We adopt Real-time data monitoring, processing and logging Graphical User Interface (GUI) for live data and trending visual and audible alarm monitoring. The extensive multitasking capabilities of our software allow it to incorporate data from a multitude of sources using various communication protocols. This includes surface instrumentation, other services (WWS, DST, Subsea, etc), and third-party equipment. We have a total data solution which, combined with 'data-to-desk' functionality, provides clients with data whenever and wherever they need it.

Our data-to-desk functionality service provides field data acquisition, secure single click data transfer, secure data server space, customer web browser with the full suite of tools necessary to view real-time data through a web browser anywhere in the world.



# 8

## Cutting Edge Flare Gas Solutions

Gas flaring introduces toxic pollutants such as sulfur dioxide, CO<sub>2</sub> and methane into the atmosphere, which can lead to environmental problems such as Releasing particulates that cause acid rains that acidifies water bodies and destroys plants and forests, as well as accelerates the deterioration of buildings and other machinery and the generation of greenhouse gases which contribute to global climate change. Paris Climate Change Agreement which included gas flaring reduction. Majority of flare gas volumes can be captured and utilized in viable investments. Cutting Edge global Energy services has been in the fore front in eliminating flare gas and thereby harnessing the huge potential embed in gas flare capture.



Cutting Edge Global Energy Services with her partners has developed methods to eliminate and convert flare gas into:

- Electricity generation with gas engine or gas turbine driven generators.  
Drive a low temperature absorption refrigeration unit to condense NGL and LPG from separator gas.
- Produce hydrocarbon liquids from the flare gas.
- Fresh potable water from oil field brine or from seawater by burning the flare gas in direct fired evaporators or reverse osmosis pump engines.
- Produce ice using absorption refrigeration driven by heat. Use flare gas to incinerate the drill tailings from production mud pits.

### **GAS TO LIQUIDS (GTL) PLANTS**

Gas to liquids (GTL) technology is evolving as an economic means to add value to gas it unravels the challenges of stranded gas by changing the gaseous material to synthetic hydrocarbon liquids that can be transported and sold more easily and cost-effectively.

## **NATURAL GAS LIQUIDS RECOVERY**

Natural gas liquids recovery allows the processor to separate and purify heavier hydrocarbons from natural gas. Heavier hydrocarbons are more likely to condense into liquids under pressure in a pipeline, slowing the flow and increasing the wear on the piping. Extracted hydrocarbons, such as propane, butane, and naphtha, can be sold more profitably as separate products.

## **UREA PRODUCTION**

Urea production is a two-step process. Ammonia and carbon dioxide are reacted to form ammonium carbamate, which is then dehydrated to form urea. The urea solution is concentrated by evaporation or crystallization, and the crystals can be melted to produce pure urea as prills or granules. The ammonia is produced using a primary and secondary reformer with a high-pressure ammonia converter. The carbon dioxide is recovered using either pressure swing adsorption or amine absorption. The carbon dioxide can be reused later in the urea production step. The majority of the urea produced worldwide is used for fertilizers. Other applications include livestock feed, urea formaldehyde resins, and engine exhaust systems.

# **9 Integrated Subsurface Evaluation And Modelling**

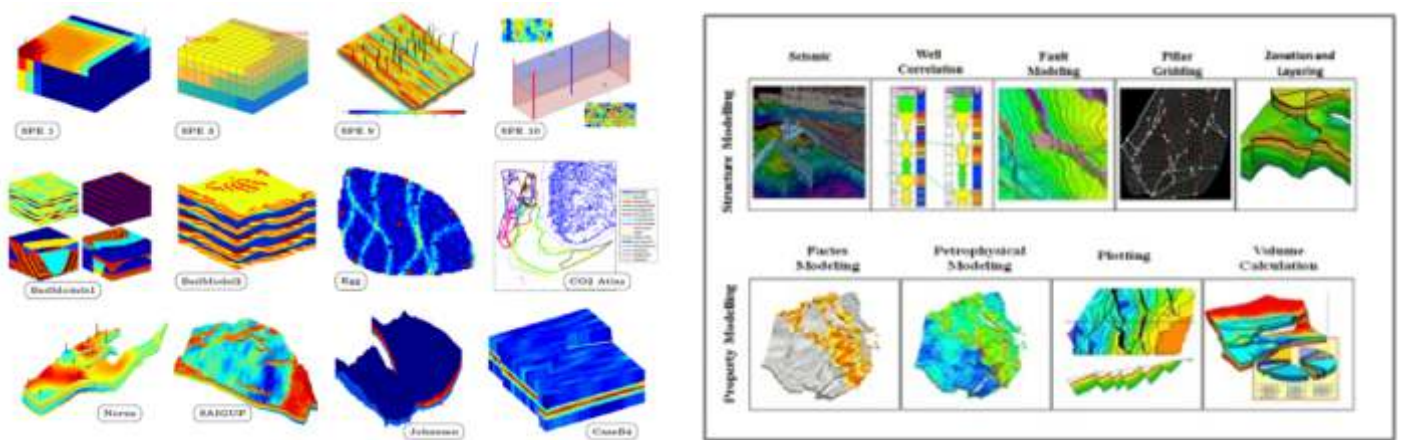
Cutting Edge Global Energy Services has the capability to perform a wide range of subsurface geophysical, petrophysical and geological studies as well as seismic interpretation projects.

Cutting Edge Global Energy Services in-house geoscience and engineering team work closely together using industry standard software such as Petrel, integrating geophysical, geological, petrophysical and engineering data to characterise a static reservoir model that is geologically reasonable for any given basin or petroleum province.

Cutting Edge Global Energy Services has supported clients in license rounds and our team can quickly evaluate available blocks, map prospects and leads, assess the risk and uncertainty associated with each element of the petroleum system, and provide work programme support moving forward.

Regional geological and integrated basin studies can be performed in locations around the world, from frontier to mature basins. Cutting Edge Global Energy Services can offer farm out services to clients, including evaluating data, constructing and hosting data rooms. Furthermore, we can provide technical support at all stages of the farm out process. Seismic interpretation projects can be carried out at a basin and field scale.

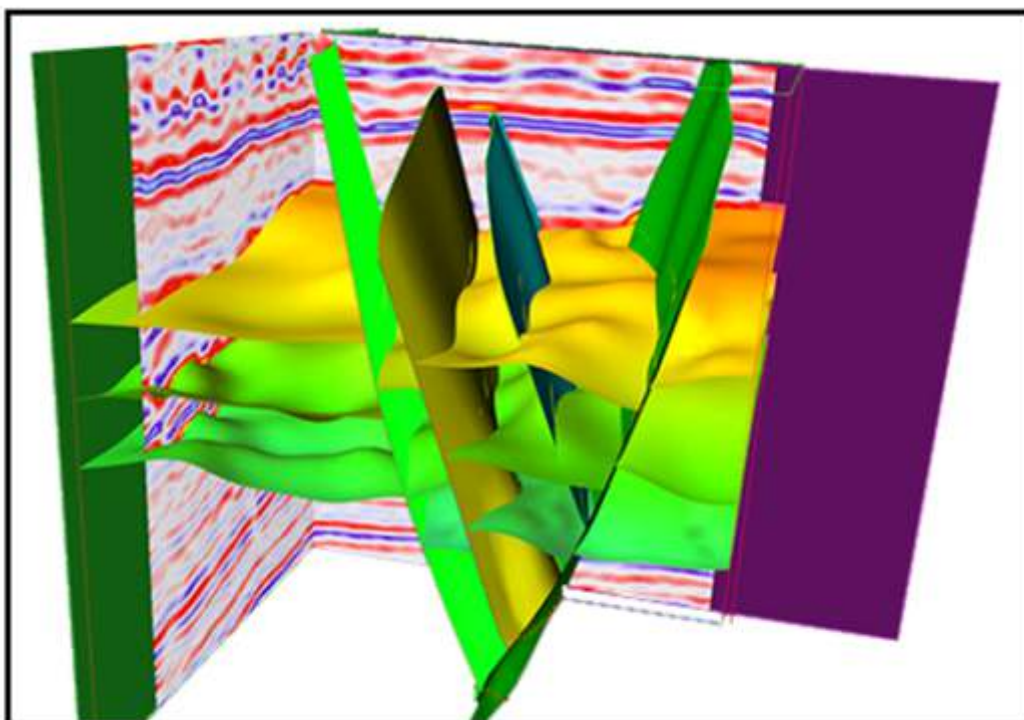
Cutting Edge Global Energy Services provide a range of petrophysical interpretation services, from quick single well evaluations, to large scale multi-well studies, including the integration of log, core and geological data, and input into geological modelling.



## SEISMIC INTERPRETATION OF UNDER-EXPLOITED ASSETS

Cutting Edge Global Energy Services performed seismic interpretation of data from undeveloped assets throughout the world to assist in the identification of future prospects, leads and development options.

This three month study involved our consultant geophysics specialist reviewing the prospectivity of fields in under exploited areas of the world using OPC's facilities and interpretation software. Data from 12 different countries was reviewed utilising IHS Kingdom software and areas with specific potential highlighted to our client. Our conclusions are being used by the client to prioritise further investment in specific assets.



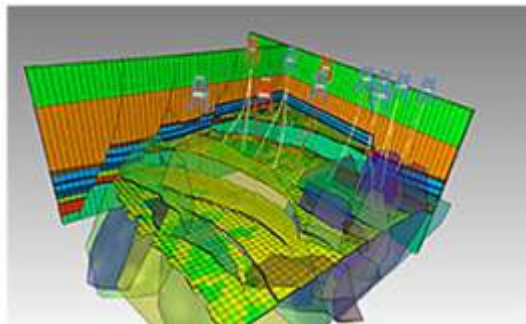
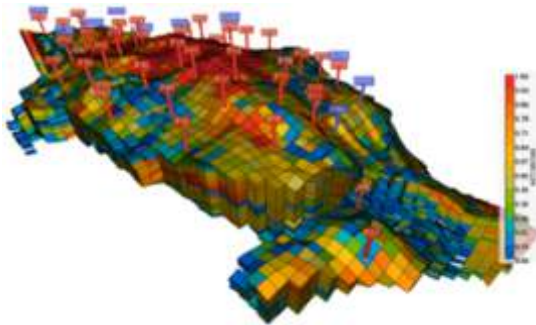
## RESERVOIR ENGINEERING

Cutting Edge Global Energy Services is one of the leading independent reservoir engineering consultants in the world providing services on a global basis to IOCs, NOCs and independent oil & gas businesses. Reservoir engineering studies have included phase behaviour and equation of state modelling and production engineering.

Cutting Edge Global Energy Services has access to industry standard software technology including Eclipse 100/300, Petrel, MBAL, Prosper, GAP, Kraken and PIE.

Our highly skilled in-house team deliver a range of Reservoir Engineering projects that include:

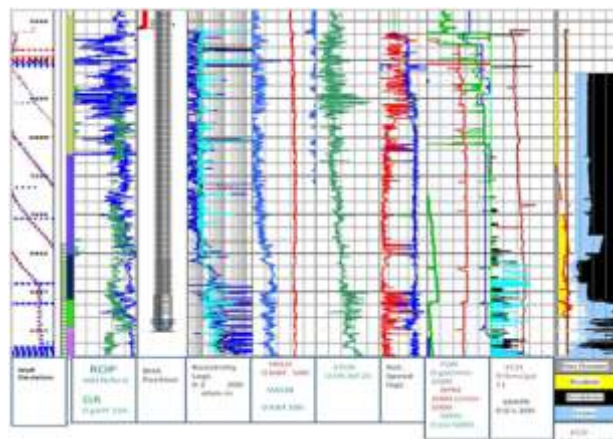
- Reservoir Engineering
- Field development planning
- Reservoir management
- Reservoir simulation
- Phase behaviour modelling
- Equation of state modelling



## PETROPHYSICS

Cutting Edge Global Energy Services is a leading petrophysics consultancy to companies within the Oil and gas sectors.

Cutting Edge Global Energy Services provides a range of petrophysical interpretation services, from quick single well evaluations, to large scale multi-well studies, including the integration of log, core and geological data, and input into geological modelling.



## RESERVOIR SURVEILLANCE

Cutting Edge Global Energy Services provides specialist Reservoir Surveillance and monitoring services using Pressure Transient Analysis to help operators maximise revenue from their oil and gas assets. Effective Reservoir surveillance/monitoring can help:

- Improve reservoir characterisation.
- Monitoring of well productivity or injectivity.
- Identify work-over candidates.
- Diagnose well performance issues for a more informed discussion on remedial work
- Identify production allocation errors.
- Fracturing of injection wells, and development of fractures through time.
- Cutting Edge Global Energy Services can utilise a wide range of data, including permanent down hole pressure and temperature gauges and production logging (PLT).

Cutting Edge Global Energy Services can give expert advice and support to your existing asset teams to come to an optimal strategy for work-over campaigns.

Cutting Edge Global Energy Services expert consultants can also be seconded into your organisation on short, medium or long term assignments in order to provide you with a dedicated reservoir surveillance specialist.

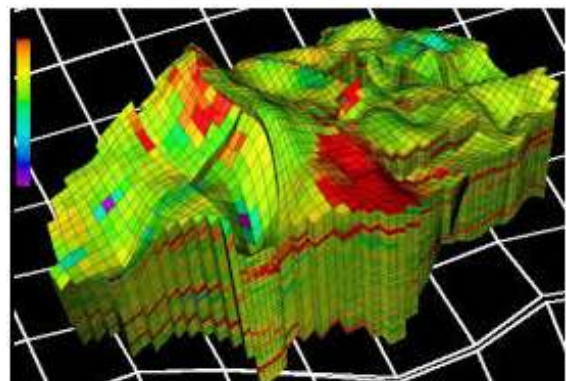
## RESERVOIR SIMULATION

Reservoir simulation is at the core of Cutting Edge technical services department. We apply the latest technology and industry standard software together with highly competent in house engineering and geoscience staff, to build geostatistical models and up-scale them to dynamic models for black oil and compositional studies, highly fractured and faulted reservoirs studies, and the pilot studies and implementation of various EOR techniques. Studies have included tight gas, gas -condensate reservoirs, reservoirs with horizontal wells and field development planning.

Reservoir engineering studies have included phase behaviour and equation of state modelling and production engineering.

OPC has access to industry standard software technology including Eclipse 100/300, Petrel, MBAL, Prosper, GAP, Kraken and PIE.

- Extensive experience with Eclipse
- Black-oil simulation
- Compositional simulation
- Horizontal wells & fractured reservoirs
- CO<sub>2</sub> miscible floods, water & steam floods
- Gas condensate & tight gas reservoirs
- Conversions of data sets between simulators



# Our Core Values

Our actions are grounded by our values, creating a safe and ethical culture.



## Our Commitment to our clients

- Health, Safety and the Environment (HSE) are our utmost watch words.
- Deliver innovative cutting-edge solutions economically and efficiently.
- We will be an integral part of our client's team with after sales support.
- We will be dependable, reliable, authentic and trustworthy.





# Our Clients/Stakeholders

Our Clients/Stakeholders include:



**ExxonMobil**





## Contact us

**Phone:** +44 1224 900 821; +44 7552 124 871; +234 817 834 6622; +234 702 022 1426

**Email:** [info@cuttingedgeglobalenergy.com](mailto:info@cuttingedgeglobalenergy.com)

**Aberdeen:** Hilton Convention Centre, 13 Smithfield Road, AB24 4NR, Aberdeen

**Lagos:** 15A Babatunde Kuboye Street, Lekki Phase 1, Lagos.

**Texas:** 1516, Nightgale Drive, Aubrey, Dallas Texas.

**Dubai:** Levels 41 & 42, Emirate Towers, Sheikh Zayed Road, Dubai.

**Website:** [www.cuttingedgeglobalenergy.com](http://www.cuttingedgeglobalenergy.com)